

OFI-30A/AT

Optical Fiber Identifier

User's Manual

Shineway Technologies, Inc.

All rights reserved.

Contents

1. Introduction.....	1
2. Technical indicators	2
3. Contents(pcs)	2
4. Details	2
5. Instruction	2
6. Maintenance.....	2
7、Quality assurance	2

1. Introduction

Optical fiber identifier is a necessary tool for the maintenance of optical fiber, used for identifying the fibers without damaging it, can work in anywhere on both single mode fibers and multi-mode fibers. And this tool can be supported by our Optical Signal Generator, to send the low frequency signal into the fiber online, make the searching of one specific fiber without signal inside the fiber possible. This instrument offers a good solution for complicated environment such as server room.

2. Technical indicators

Table2-1 technical indicators

Model	Optical fiber identifier		
Range of wavelength	800~1700nm		
Sensor type	Ø1mm InGaAs 2pcs		
Adapter type	H 0.25 for bare fiber ; H 0.9, H 2.0, H3.0 for pigtail		
Type of identifying signal	CW, 270Hz, 1KHz, 2KHz		
Direction indicator	L/R LED light		
Signal direction test range (CW, Ø3mm)	-20~10dBm(1310nm)		
	-30~10dBm(1550nm)		
Signal power test range (CW, Ø3mm)	-30~10dBm		
Signal Frequency Display	270Hz, 1KHz, 2KHz LED light		
Frequency Test Range (Average)	H0.9, H2.0, H3.0	-30~0dBm	-25~0dBm
		(270Hz, 1KHz)	(2KHz)
Insertion Loss (Typical)	0.8dB(1310nm)		
	2.5dB(1550nm)		
Remaining Battery Power Indicator	LED light in two color		
Weight(without battery)	< 210g		
Model	Optical Signal Generator		
Signal Type	1Hz low frequency signal		
Signal Mode	Mechanical vibration		
Insertion Loss	<1dB (1310nm)		
Fiber Type	G657A1、G657A2、G655、G652D		
Fiber Diameter	0.9/2/3 mm		
Weight(without battery)	< 230g		
Battery voltage	9V		
Operating time	> 8hrs(depends on environment)		
Working temperature	0~+50℃		
Storage Temperature	-10~+70℃		
Dimension	209×33×31mm		

3. Contents (pcs)

1. Fiber Identifier-----	1
2. Optical Signal Generator-----	1
3. User Manual-----	1
4. Soft Pack-----	2
6 Battery-----	2
7 Adapter-----	4
8 Shading Cover-----	1

4. Details

4-1 Appearance

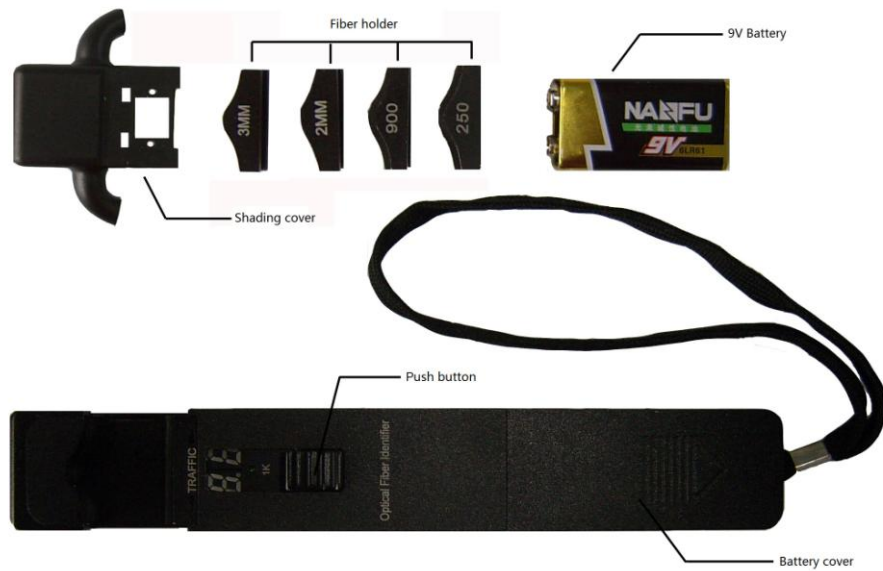


Figure 4-1 General view of OFI

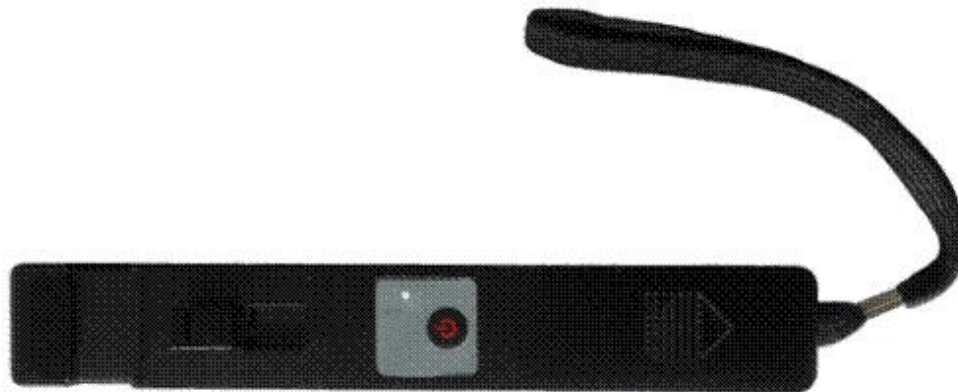
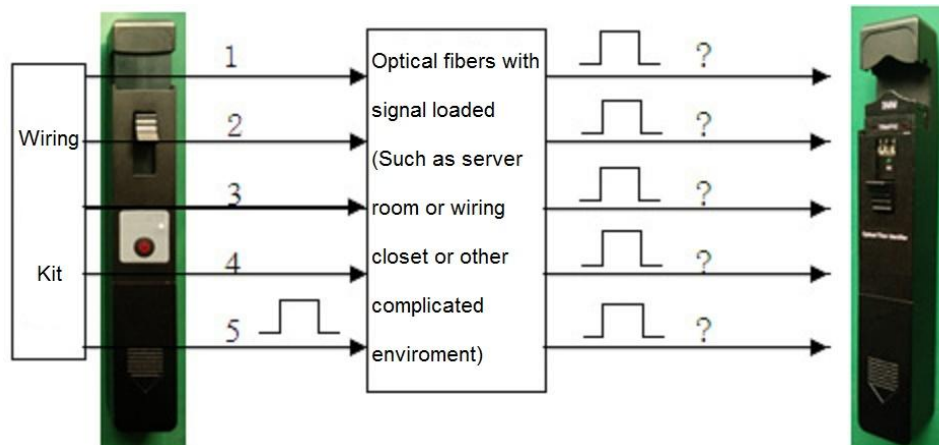


Figure 4-2 General view of OFI

4.2 Principle



Optical Signal Generator is a signal generator which supports the OFI, it can make the loss maintains a low level.

Send a low frequency signal to fiber which is working normally. OFI can detect this signal and notice user by sound or light

4.3 Feature

- 1: Can detect the direction of light and its frequency without cutting the fiber;
- 2: Operate with one key, easy to use;
- 3: Offers adapter for bare fibers and pigtails;
- 4: Can detect 3 frequency which are common used, such as 2KHz, 1KHz, 270Hz; notice with beep.
- 5: Can display the optic power within the fiber;
- 6: Able to detect the low frequency signal which is sent by OSG;



7: Powered by #9 dry cell

8:Displays battery status,to notice user when battery is low;

9:LED indicators are easy to read.

4.4 Main function

(1) Holder

Hold and keeps the fiber

(2) Holder presser

Adjust the holder's tightness

(3) Indicating light

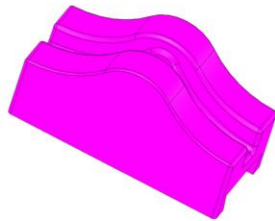
Indicates the direction,power,and frequency.

5. Instruction

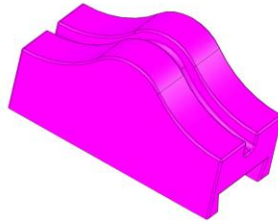
5.1 Choose the adapter

Choose different adapter for different type of fibers.

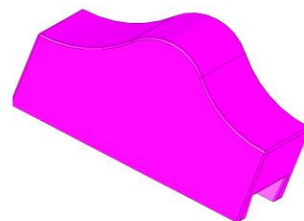
There are 4 types of adapter for OFI:



H 3.0 适配头



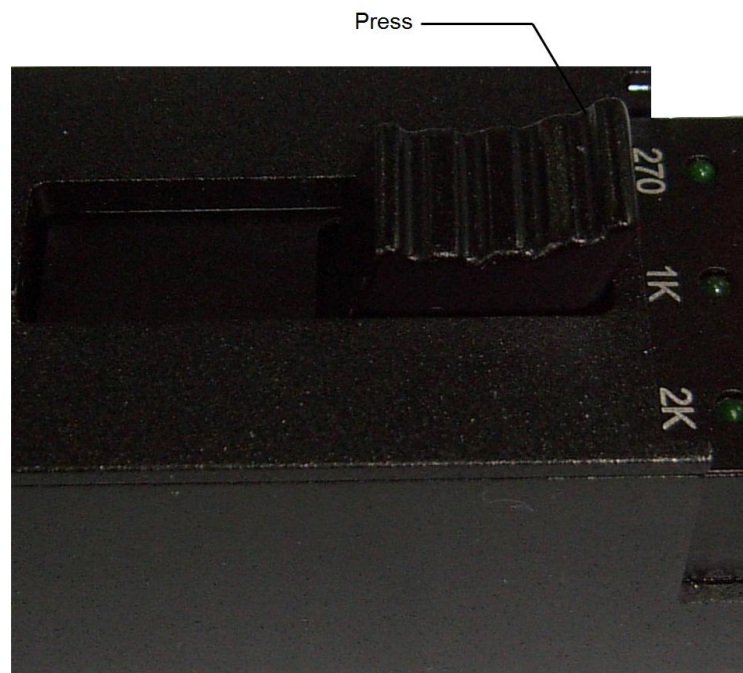
H 2.0 适配头



H 0.9/0.25 适配头

5.2 Adjust the tightness of fiber holder

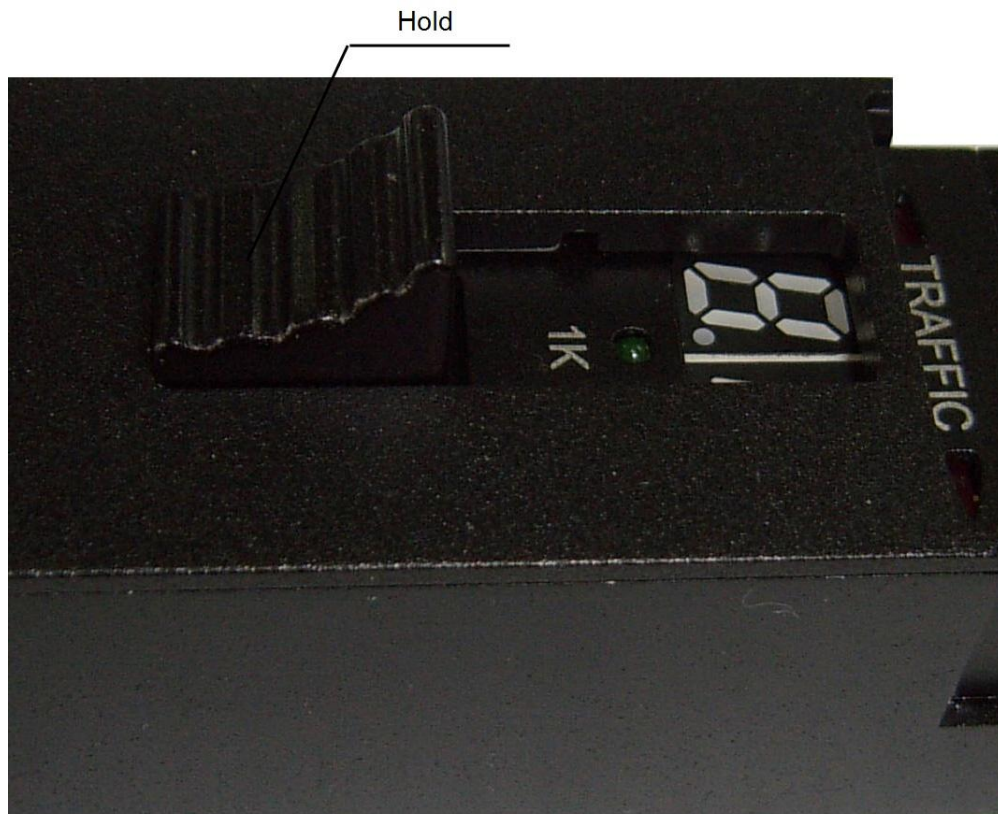
1. When need to tighten the holder, push the button and hold it, then press the top side of pushing button, push it to lock the holder;



Tighten the holder

2. When need to loosen the fiber, press the pressing button slightly and

hold the bottom side of button, fiber will loosen the fiber automatically.



Loosen the holder

5.3 Turn on/off

1. Push the button upward, OFI will turn on automatically.
2. Release the button, OFI will turn off automatically.

5.4 Fiber identify

1. Put the fiber into the holder's groove, push the button to lock the holder, then put the shading cover onto OFI.



2. If there are signals in the fiber, then the direction light will indicate the signal's direction, power display will show its power.
3. If there are no signals in the fiber, then power display will show LO, in the same time the direction light might be flashing, the direction light also flashes when there are no fiber in the holder.
4. When the frequency of signal is 2KHz, 1KHz, 270Hz, the related light will turn on with beep. (If signal is too weak, it can not be identified properly).
5. **When add the low frequency signal with OSG, the OFI will detect this signal automatically. If the correct fiber was founded, then the digital displayer will display a rolling "I" with beep, if the signal is too weak or the fiber is a wrong one then this signal can not be detected.**

5.5 Battery status (Only for OFI)

1. When the battery light is green, it means the residual capacity of the battery is sufficient.
2. When the battery light is yellow-green, it means the residual capacity of battery is about to run out, OFI still can work but user should replace the battery
3. When the battery light is red, it means the residual capacity is ran out, the OFI can't be turned on and the battery have to be replaced.

5.6 Replace the holder

1. Push the adapter of holder left or right, remove the adapter.
2. Choose the adapter which is related to the fiber which is need to be tested.
3. Push the adapter through the holder slide slightly until it's positioned.

5.7 Operating of optical signal generator

The operating of optical signal generator is simple, just push the fiber into the holding groove and tighten the pushing button turn on the generator to start work. In order to save battery turn the generator off when not using it.

6. Maintenance

1. Make sure the adapter is related to the fiber under test, fiber should be in the center of holder and set into the groove.
2. Avoid touching the both side of holder with hand of other stuff. 3. Keep the sensor on the both side of holder clean, clean the surface of sensor periodically.
4. Take the battery out if its won't be used in a long period.

7、Quality assurance

We do not suggest user to fix the OFI by themselves

7.1 The warranty period is 18 months after customer receive the OFI.

We commit all the material and technology of our products, the warranty period is 18 months after customer receive the product. If there exists any quality problem, we will do appropriate fixing or offer replacement. But in any situation, our responsibilities won't exceed the product's price.

7.2 If the machine fails during operating, and can not be fixed by common solution, then contact us or our agent, do not open the outer case.

7.3 For the quality problem which is caused by production, the factory which send this product will offer repairing or replacement for free, this guarantee only used for normal using of our products, and not damaged or used in wrong way.

Warranty of OFI is not covering following situations.

- 1、Fix or modify our product without authorization
- 2、Faulty operation, misuse, or accidents

Warranty Registration card

We will put warranty registration cards into our products.

Please fill it and send it with a copy of invoice back to our market department, to make sure we have record about your machine during maintenance, updating or calibration.